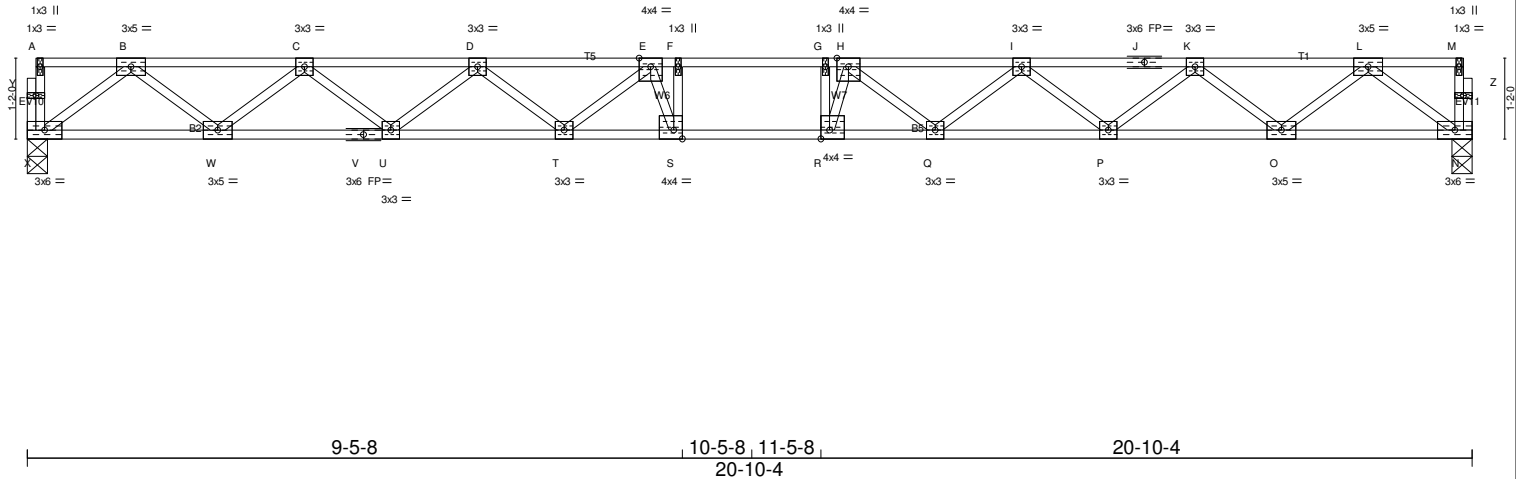
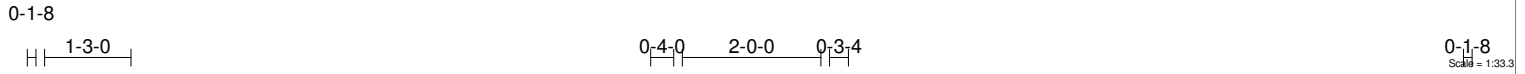


Job 11340	Truss F01	Truss Type FLOOR	Qty 20	Ply 1	SEMPLE FARM ESTATES
--------------	--------------	---------------------	-----------	----------	---------------------

TRUSS TECH, INC, MELFA, VA 23410, 2010 UPDATE
 7.250 s Jan 28 2011 MiTek Industries, Inc. Tue Jul 12 13:50:13 2011 Page 1
 ID:nd1nKUMQRVLFvzYxjZEHc2Zwp5q-_NfGAKUd039Y_2Rtdn?izLLCEX8jVklPqndudgyyoqe



LOADING (psf)	SPACING 1-7-3	CSI	DEFL in (loc) l/defl L/d	PLATES GRIP
TCLL 40.0	Plates Increase 1.00	TC 0.62	Vert(LL) -0.41 R-S >598 360	MT20 244/190
TCDL 10.0	Lumber Increase 1.00	BC 1.00	Vert(TL) -0.65 R-S >382 240	
BCLL 0.0	Rep Stress Incr YES	WB 0.43	Horz(TL) 0.10 N n/a n/a	
BCDL 5.0	Code IRC2006/TPI2002	(Matrix)		Weight: 104 lb FT = 0%F, 0%E

LUMBER
 TOP CHORD 4 X 2 SYP No.2
 BOT CHORD 4 X 2 SYP No.2
 WEBS 4 X 2 SYP No.3

BRACING
 TOP CHORD Structural wood sheathing directly applied or 6-0-0 oc purlins, except end verticals.
 BOT CHORD Rigid ceiling directly applied or 1-4-12 oc bracing.

REACTIONS (lb/size) X=901/0-3-8, N=901/0-3-8

FORCES (lb) - Maximum Compression/Maximum Tension
 TOP CHORD X-Y=-31/0, A-Y=31/0, N-Z=-31/0, M-Z=-31/0, A-B=-2/0, B-C=-1963/0, C-D=-3317/0, D-E=-4137/0, E-F=-4436/0, F-G=-4436/0, G-H=-4436/0, H-I=-4137/0, I-J=-3317/0, J-K=-3317/0, K-L=-1963/0, L-M=-2/0
 BOT CHORD W-X=0/1137, V-W=0/2763, U-V=0/2763, T-U=0/3849, S-T=0/4405, R-S=0/4436, Q-R=0/4407, P-Q=0/3848, O-P=0/2763, N-O=0/1137
 WEBS F-S=-444/239, G-R=-500/277, B-X=-1424/0, B-W=0/1076, C-W=-1041/0, C-U=0/722, D-U=-692/0, D-T=0/411, E-T=-453/0, E-S=-335/583, L-N=-1424/0, L-O=0/1076, K-O=-1041/0, K-P=0/722, I-P=-691/0, I-Q=0/417, H-Q=-462/0, H-R=-369/635

NOTES
 1) Unbalanced floor live loads have been considered for this design.
 2) This truss is designed in accordance with the 2006 International Residential Code sections R502.11.1 and R802.10.2 and referenced standard ANSI/TPI 1.
 3) Recommend 2x6 strongbacks, on edge, spaced at 10-0-0 oc and fastened to each truss with 3-10d (0.131" X 3") nails. Strongbacks to be attached to walls at their outer ends or restrained by other means.

LOAD CASE(S) Standard