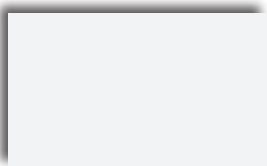
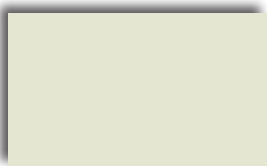




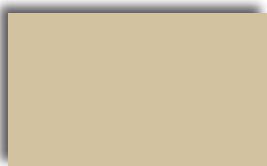
MS COLORFAST45® PAINT SYSTEM



Bright White (39) ☆



White (30) ☆



Light Stone (63) ☆



Mocha Tan (22) ☆



Brown (12) ☆



Patriot Red (73) ☆



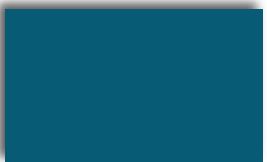
Red (24) ☆



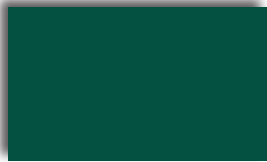
Dark Red (46) ☆



Hawaiian Blue (70) ☆



Ocean Blue (35) ☆



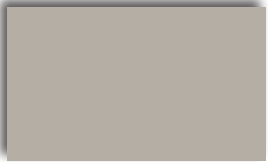
Forest Green (26) ☆



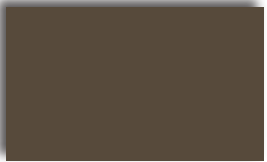
Patina Green (58) ☆



Charcoal (17) ☆



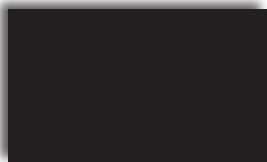
Ash Grey (25) ☆



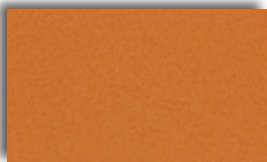
Burnished Slate (49) ☆



Burgundy (15) ☆



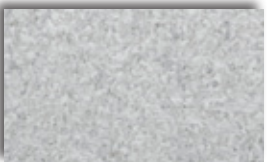
Black (06) ☆



Native Copper (E95)² ☆



Galvalume (41)¹



Galvanized (00)¹

www.metalsales.us.com

45 Year Paint Warranty



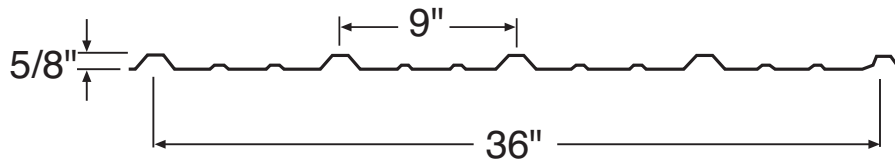
☆ Meets or Exceeds Steep Slope Energy Star Requirements

¹ Non-Painted Finish

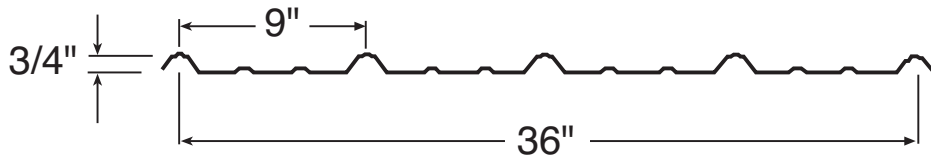
² Additional cost and lead time will apply

Color selections are close representations but are limited by processing and viewing conditions. Actual samples are available upon request. For all specific warranty, application, installation, and technical information regarding these products contact your local sales representative.

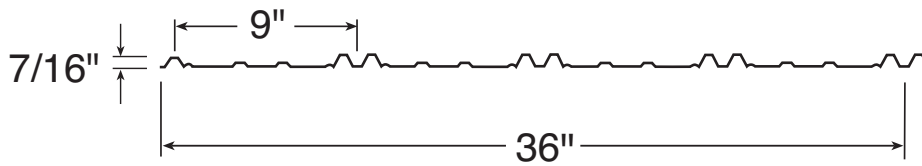
PANEL SPECIFICATIONS AND FASTENING RECOMMENDATIONS



Pro-Panel II®

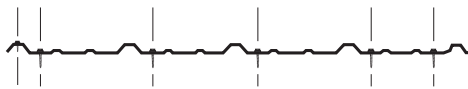


Classic Rib®

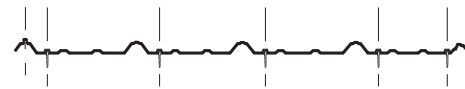


Bi-Rib

Pro-Panel II Screw Fastener Recommendations



Classic Rib Screw Fastener Recommendations



Pro-Panel II Nailing Recommendations



Classic Rib Nailing Recommendations



PAINT SYSTEM

MS Colorfast45® is a thermoset paint system composed of polyester resin which has been modified with silicone resin. The MS Colorfast45® system offers good protection from the elements with special consideration to chalk and fade resistance, durability, and chemical resistance.

Color side of panel

Total dry film thickness 0.90 - 1.10 mil.

Reverse side of panel

Total dry film thickness 0.50 - 0.70 mil.

All measurements are in accordance with ASTM D 1005.

MS COLORFAST45® PAINT PERFORMANCE

Salt Spray Resistance

ASTM B 117	1,000 Hours	Creep from scribe no more than 1/16" (2 mm), no blisters
------------	-------------	--

Humidity Resistance

ASTM D 2247	1,000 Hours	No field blisters
-------------	-------------	-------------------

Abrasion Resistance

ASTM D 968	Method A	30 liters/mil minimum
------------	----------	-----------------------

Chalk Resistance

ASTM D 4214	2,000 Hours	No chalking greater #8 rating
-------------	-------------	-------------------------------

Color Change

ASTM D 2244	2,000 Hours	Finish Color Coat change not to exceed 6 Hunter units (non-vertical)
-------------	-------------	--



When installed properly, this product will help reduce energy costs.

Actual savings will vary based on geographic location and individual building characteristics.